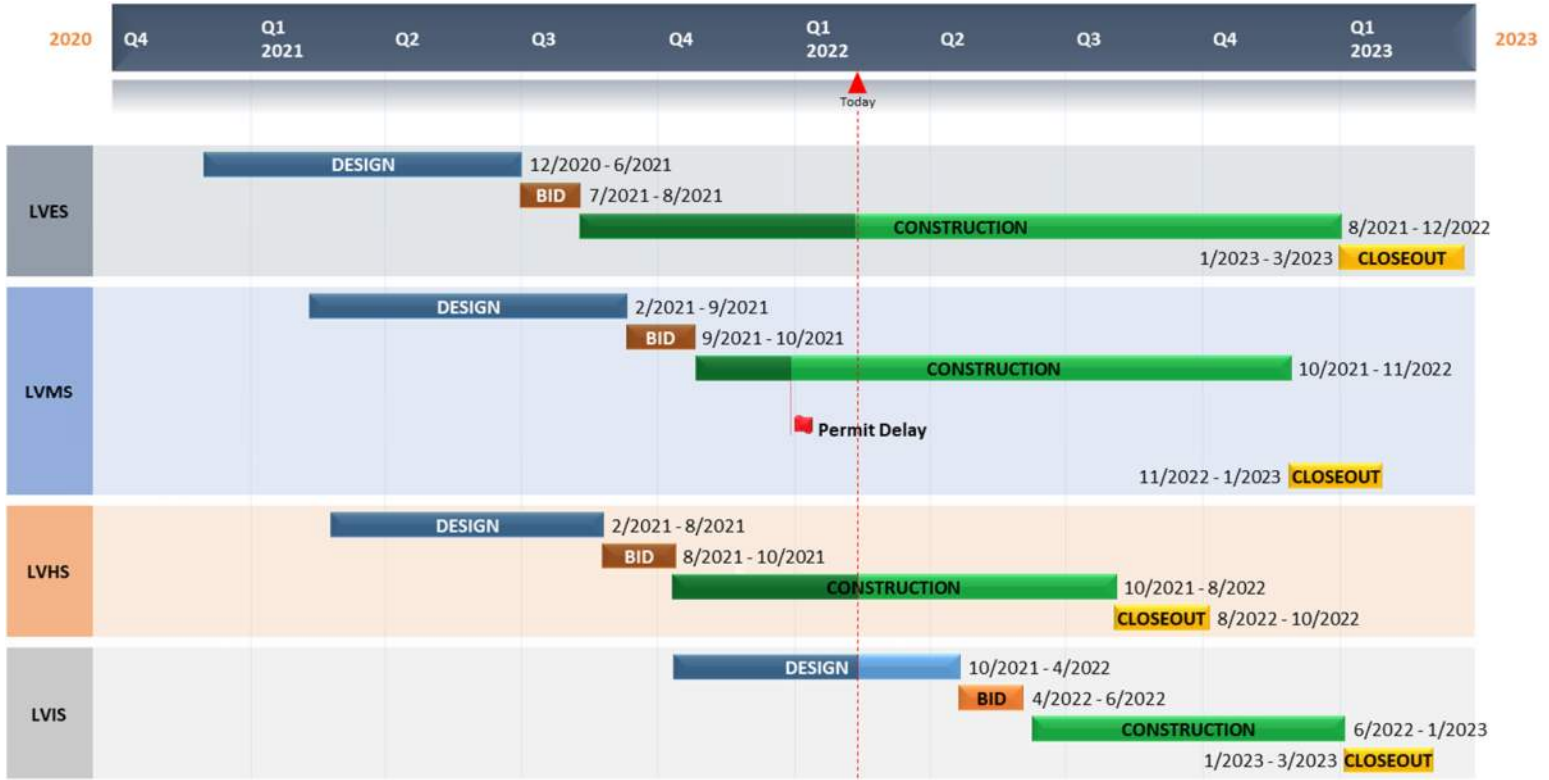




## MASTER SCHEDULE



## REVENUES AND EXPENDITURES

Project	Budget	Committed	Expenditures	Unencumbered
Elementary School	\$17,510,265	\$16,843,599	\$4,697,541	\$666,666
Middle School	\$8,773,167	\$8,353,088	\$648,877	\$420,079
MS Roof	\$1,914,134	\$1,899,019	\$1,870,210	\$15,115
High School	\$11,112,764	\$10,519,547	\$2,191,127	\$593,217
Intermediate School	\$4,189,010	\$417,938	\$374,985	\$3,771,072
Land Acquisition	\$830,660	\$0	\$0	\$830,660
<b>Totals</b>	<b>\$44,330,000</b>	<b>\$38,033,191</b>	<b>\$9,782,740</b>	<b>\$6,296,809</b>
Percent of Total Budget		86%	22%	14%



ELEMENTARY SCHOOL ADDITIONS



Two Story Classroom Addition



Cafeteria Addition





HIGH SCHOOL ADDITIONS/RENOVATIONS



Theater Addition Foundation



Culinary Arts Addition





**HIGH SCHOOL ADDITIONS/RENOVATIONS**



Culinary Arts Addition



Weight Room/Multipurpose/Shop Building Pad